



#### GUPTA ALLERGY

Allergy and  
Asthma  
Specialists



#### WERTZ ORTHOPEDIC PHYSICAL THERAPY



#### SCOOTER'S HOLT PRO CYCLE

Moves to new  
location

OURTOWN AT A GLANCE >>



## Trick Titanium

### “Proven combination for winning”

Unless you happen to own a race car, you might not have paid much attention to the unassuming building where “the gold standard of bellhousings” and other precision race car components are manufactured.

Trick Titanium produces titanium valves, housings and other high-performance components sold to racing teams and owners worldwide. Entrepreneur, race car driver and Stealth Engineering & Technologies founder Mike Miller acquired Trick Titanium in 2008 and merged the two companies.

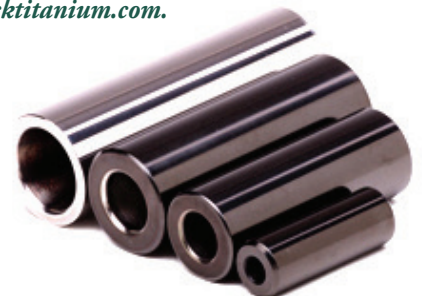
Machining exotic alloys such as titanium requires a special expertise. The Trick Titanium team—including AutoCAD and Unigraphics-certified design engineers and CNC machinists—has honed that expertise, producing parts that hold extremely high tolerances.

Trick Titanium currently employs 18 people, said associate Chris Thomas. “We’re expanding right now,” she said. “We need more elbow room and we’re adding more machines.”

Trick Titanium also handles some manufacturing for Orchid Orthopedics (part of Stealth Engineering & Technologies and the Trick Titanium family). Strange as it may sound, the processes for producing precision human joint replacements and high-performance auto parts are not unrelated.

Regardless of the part being created, Trick Titanium focuses on what the customer wants: a highly durable and long-running product.

*Trick Titanium is at 2046 Depot Street, Holt,  
694.7449, [tricktitanium.com](http://tricktitanium.com).*



DEDICATED TO HELPING OUR COMMUNITY & ITS BUSINESSES GROW

A publication of the Delhi Charter Township Downtown Development Authority • [www.DelhiDDA.com](http://www.DelhiDDA.com)



# Gupta Allergy

## Allergy and Asthma Specialists

If you don't suffer from allergies or asthma yourself, you undoubtedly know at least one person who does. However, said Dave Gupta, M.D., asthma and allergies—particularly food allergies—are often over- or mis-diagnosed.

“We try to focus on accurate diagnosis of asthma and food allergies,” he said. “Rather than rush to attach a label, we want to remove the label whenever possible.”

Dr. Gupta is a second-generation allergist, working with his father, Satish Gupta, M.D., who founded the practice. Both are board-certified in allergy and immunology. And both enjoy helping patients of all ages enjoy better quality of life through accurate diagnosis, management, and, when necessary, treatment of their allergies. Their specialties encompass the gamut of allergy-related conditions—from asthma to hives; from sinusitis to eczema to insect allergies and more.

Gupta Allergy relocated to Delhi Township in July 2016, after 30 years in Medical Center West near the Sparrow St. Lawrence Campus.

“We took some time finding a new location that would be convenient for patients and give us room to grow,” said Dr. Gupta. He’s also pleased with the renovations,

architectural touches and calming atmosphere of their offices, noting that people often have anxiety about doctor visits.

“Our surroundings are designed to put people at ease.”

***Gupta Allergy is at 4265 Five Oaks Drive, Lansing, 484-2261, [guptaallergy.com](http://guptaallergy.com)***







# Delhi ranks high in housing starts, assessed values

**W**hile local home building still isn't quite back to pre-2009 levels, things are definitely looking up. And one of the places they're looking up the most is Delhi Township.

Local communities seeing the most growth in housing starts are Delhi Township, Okemos and East Lansing, said Greater Lansing Board of REALTORS® president Kim Dunham in a recent *Lansing State Journal* article (<http://www.lansingstatejournal.com/story/news/local/2017/01/03/after-crash-lansings-new-housing-market-finds-new-normal/95911666/>). Among the factors driving this growth, according to the article, are the availability of land in these communities and the positive reputations of their school districts.

Delhi also leads multiple local units of government in the growth of both assessed and taxable property values, said Delhi DDA Executive Director C. Howard Haas, with increases of 408 percent and 371 percent respectively.

"We have a very specific mission that includes a number of ways of helping to bring property tax values up," he said.

Thanks in part to the DDA's efforts to halt property value deterioration, clean up environmentally impacted properties for redevelopment, promote economic growth and focus on placemaking, "Our community offers amenities that make it a very desirable place to live," Haas said.

## ASSESSED PROPERTY VALUES

408% ↑

## TAXABLE PROPERTY VALUES

371% ↑



# Simple Steps For Bicycle Safety

Spring brings ample opportunities for outdoor recreation. One favorite activity for all ages is riding a bicycle—and our community offers plenty of trails to explore and roadways to travel. But please be safe when you ride!

I have watched my children begin to gain confidence in their own abilities, hone their balancing skills, and learn the importance of cause and effect—all while turning simple circles on their bikes in the driveway without training wheels. But never without a helmet! Whatever their skill levels, all riders should always wear a properly fitted helmet.

Here's some more great information for riders of all ages from the National Highway Traffic Safety Administration (NHTSA) at [www.nhtsa.dot.gov](http://www.nhtsa.dot.gov):

Fit the bike to the rider. NHTSA guidelines say the seat should be level front to back, with a one- to two-inch gap between the person and the top tube (bar) for a road bike, and three to four inches on a mountain bike. The seat height should be adjusted to allow a slight bend in the rider's knee when the leg is fully extended. Handlebar height should be the same as the seat.

Go with the flow of traffic. NHTSA reminds us that bicycles are vehicles and the rider is the driver. Always ride on the right side of the roadway and obey all traffic laws, signals, signs and road markings as if you were in an automobile. Bicyclists must yield to pedestrians and should always look before turning. Also, watch for parked cars. Try to keep a safe distance in case a car pulls out of a parking spot or the doors open.

NHTSA also recommends not riding your bicycle at night. If you have to ride at night, always wear reflective clothing and have reflectors on your bike, with a white light on the front of your bike and a red light on the rear. Visit the NHTSA website for more great tips and simple, common practices to follow and teach to children.

Take the time to enjoy everything Delhi Township offers with the parks and trail systems—and make it a safe and enjoyable time for your family to remember together.

***If you have any questions or concerns, please contact any of the Ingham County Sheriff's Office Delhi Division staff at 2045 North Cedar St., Mason, 517.694-0045.***





## VENDOR PROFILE | Meet Otto's Chicken!



We're proud to have Otto's Chicken of Middleville, Michigan, among our vendors. Otto's offers farm-fresh, antibiotic- and hormone-free chicken at the Holt Farmers Market and at its farm store in Middleville.

You're sure to love the taste of this locally raised chicken. Otto's chickens enjoy fresh, natural food and clean water, as well as plenty of space for roaming around. Exercise and diet are very important in the health of the chicken, and healthy chicken is tasty chicken!

Otto's Chicken combines years of experience, top-notch management and a passion for poultry. Taste the difference—it's the natural choice!

Pat Bunting of Otto's Chicken with Holt Farmers Market manager Chuck Grinnell.

## Former library to serve as community meeting place

It's been a library, a daycare center and more, but for the past year or so, the neat brick building at 4410 Holt Road has sat unused. That's about to change.

Now owned by the Delhi DDA and Delhi Township, the former library will soon be renovated to house the Holt-Delhi Historical Society offices and up to three community meeting spaces.

Although the new meeting spaces will offer greater capacity than the township board room, which also hosts outside meetings, "It's not intended to compete with large meeting and reception facilities," said Lori Underhill of the DDA. "It will be great for service clubs, neighborhood associations, and some library functions."

Renovation plans are still being evaluated, but the DDA hopes construction will begin by early summer.



THE MAIN CORNERS - HOLT, MICH. 339-2.

Then



Now

## OURTOWN | Then & NOW

### "The Four Corners"

This year marks the 175th anniversary of Delhi Charter Township. What better time to take a look back—way back!—at earlier days? We don't have a photo from the year of our founding, 1842, but here's the intersection of Holt Road and Cedar Street circa 1914—and as it looks now, with nary a horse in sight!

*Historical photo courtesy of the Holt-Delhi Historical Society, [holtdelhihistoricalsociety.webs.com](http://holtdelhihistoricalsociety.webs.com).*



# Wertz Orthopedic Physical Therapy

## *“Physical therapy as it should be”*

“I inherently enjoy helping people function better. I enjoy watching them get better at what they’ve been struggling with.”

So says physical therapist Nathan Wertz, MS, PT, OMPT, CIDN, about why he does what he does.

Whether the struggle is recovering from an athletic injury, an auto accident, a work-related condition or pre- or post-surgery rehab, Nate’s goal is to get his patients back to doing what they love. He helps them reach their goals through a specialized one-on-one treatment plan that helps reduce pain, restore function, and increase strength over time.

Nate holds a specialty credential in orthopedic manual physical therapy (OMPT)—a specialized form of physical therapy that involves strategic manipulation of the spine and other joints. With extensive training and years of hands-on experience, Nate can evaluate, diagnose and treat cases across the spectrum of complexity. And

every patient has the assurance that Nate himself will work with them throughout the therapy.

“I work with them from start to finish,” he said.

Nate earned a bachelor’s degree in kinesiology from Michigan State University, a master’s in physical therapy from Central Michigan University and his specialty certificate in OMPT from Oakland University. He is one of only a handful of OMPTs in the Lansing area.

Nate said he is honored to be able to serve the community he grew up in. When he’s not treating patients or managing his company, he enjoys spending time with family and friends, camping and watching Spartan athletics. Nate and his wife, Leslie, have three children.

***Wertz Orthopedic Physical Therapy is at 3410 Belle Chase Way, Suite 700, Lansing, 517.657.7790, [wertzpt.com](http://wertzpt.com).***

Nathan Wertz, owner

sored By:

  
BOYS & GIRLS CLUB  
OF LANSING

Orthopedic  
Physical Therapy



# Scooter's Holt Pro Cycle moves to new location

It's been five years since Mark Dunn bought the bicycle business where he worked as a kid. Now he's bought a bigger building to house it.

"We were bursting at the seams," said Mark. "We decided to step it up."

His new shop—across from Holt Farmers Market—offered a prime location on Cedar Street. But turning the space into a bike shop? That was where the real fun began.

"We gutted it," Mark said.

Then he and his friends tackled the work of putting it back together, handling all but two of the renovation projects themselves. One friend even painted a 30-foot mural on the store's exterior.

In December 2016, after six months of renovation, Scooter's Holt Pro Cycle opened in its new home.

And it seems the move to a better space came at just the right time.



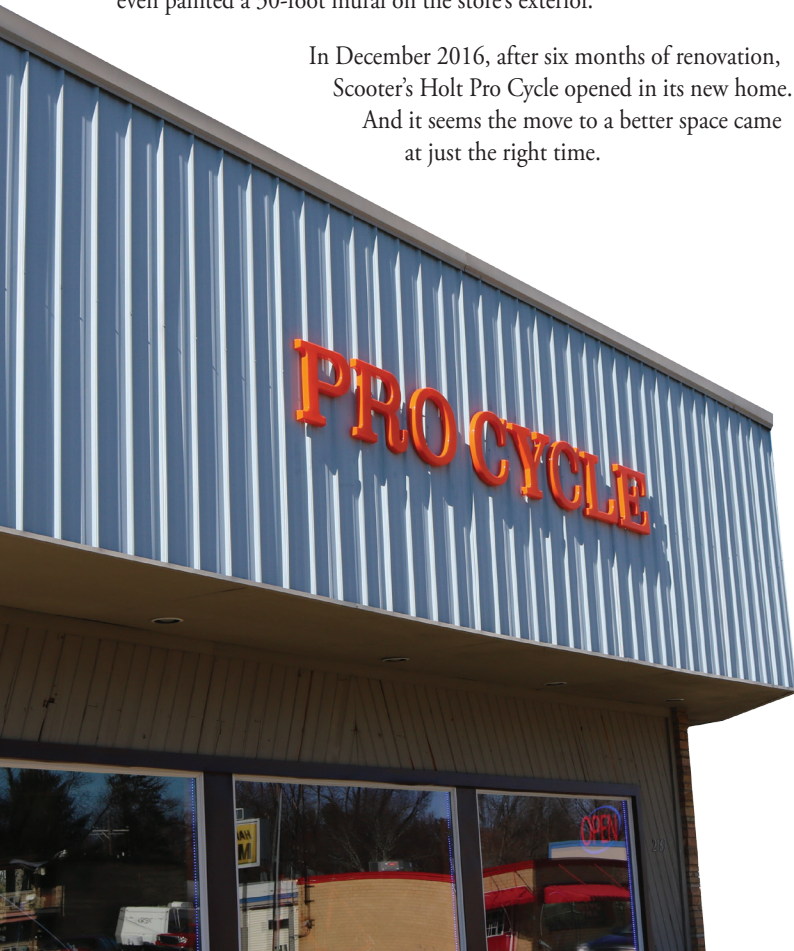
"We had our best January and February ever," Mark said.

Beyond the familiar mountain bikes, 10-speeds and BMXs, Mark sells and services bikes for "virtually every kind of riding one can imagine." And, he added, there's even a nice neighborhood to do test rides in.

One thing that hasn't changed in five years is Mark's outlook. He loves the community, loves what he does—and it shows.

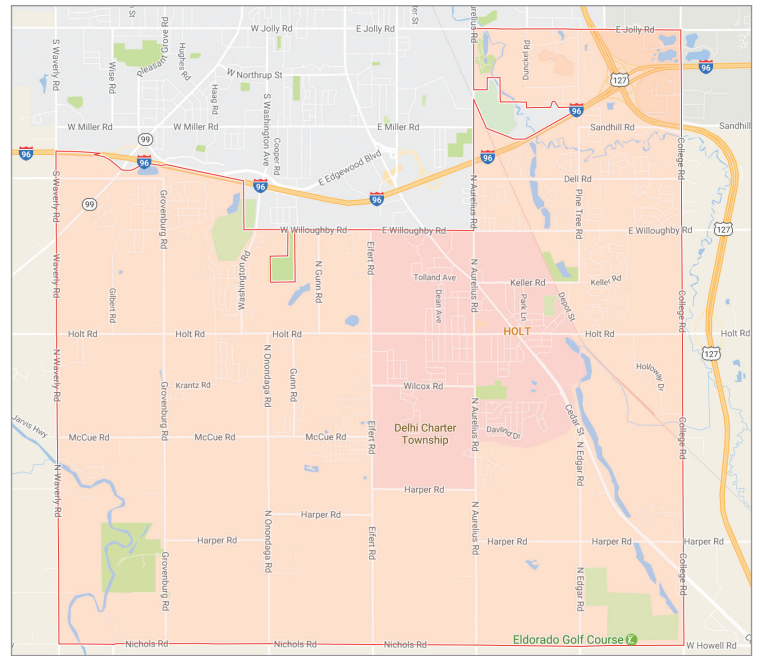
"It's really not work anymore," he said.

*Scooter's Holt Pro Cycle is at 2169 North Cedar Street, Holt, 694.6702, [www.scootersholtprocycle.com](http://www.scootersholtprocycle.com).*



# Where in the world is Delhi Township?

You might be surprised to see the reach of Delhi Township. What we think of as Holt/Delhi actually includes properties with addresses in Holt, Lansing, Mason and Dimondale. And, in addition to being home to Holt Public Schools, portions of the township include schools in the Mason, Eaton Rapids and Lansing school districts. Delhi encompasses 29 square miles—including 256 acres of water—and, as of the 2010 census, is home to nearly 26,000 residents.



## THE DDA – WHO WE ARE AND WHAT WE DO

The Downtown Development Authority (DDA) promotes economic development through business attraction/retention programs and works to foster investment within the DDA district. It strives to increase the township's tax base and strengthen the local economy while maintaining those qualities that make Delhi Township a desirable place to live and work. For more information, visit us at [www.DelhiDDA.com](http://www.DelhiDDA.com).

**To contact us:** Howard Haas, Executive Director  
2045 North Cedar Street, Holt, MI 48842  
517.699.3866  
[Howard.Haas@delhitownship.com](mailto:Howard.Haas@delhitownship.com)

## THE DDA BOARD MEMBERS:

Harry Ammon  
Kim Cosgrove,  
*Holt Schools Representative, Treasurer*  
Dr. Tim Fauser, *Vice Chairperson*  
John Hayhoe, *Township Supervisor*  
Dr. Brian Houser  
David Leighton, *Chairperson*  
Steven L. Marvin  
Nanette Miller, *Secretary*  
Tonia Olson, *Planning Commission Representative*